



El Dorado
DRILLING TOOLS



CATÁLOGO 2023
MARTILLO DTH

MARTILLOS DTH



El Dorado
DRILLING TOOLS





MARTILLO 3" EDS3.5-DHD3.5



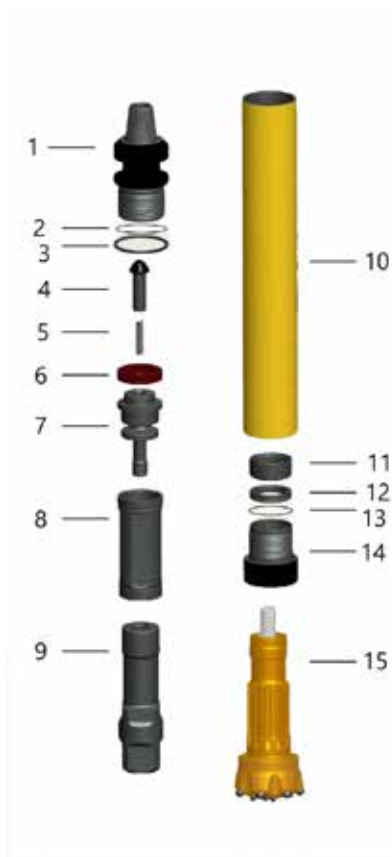
MARTILLO 3" EDS3.5-DHD3.5		
No.	DTH HAMMER	MFM3.5A-01
1	Top Sub	MFR3.5A-01
2	Check Valve	MFR3.5A-02
3	Spring	MFR3.5A-03
4	Air Distributor	MFR3.5A-04
5	Internal Cylinder	MFR3.5A-05
6	Piston	MFR3.5A-06
7	External Cylinder	MFR3.5A-07
8	Guide Sleeve	MFR3.5A-08
9	Bit Retaining Ring	MFR3.5A-09

MARTILLO 3" EDS3.5-DHD3.5 DATOS TÉCNICOS					
LARGO (w/o bit)	PESO (w/o bit)	DIÁMETRO EXTERIOR	SHANK	DIÁMETRO AGUJERO	ROSCA
865 mm	23 kg	80 mm	DHD3.5	90-110mm	API-2 3/8 REG
PRESIÓN	IMPACTO	CONSUMO AIRE	VELOCIDAD DE ROTACIÓN RECOMENDADA		
1.0-2.5 MPa (145-365 psi)	25HZ en 1.7 MPa (246PSI)	5-9 m3/min (176.5-317 cfm)	30~60rpm		



MARTILLO 5" EDS50-QL50V

MARTILLOS DTH

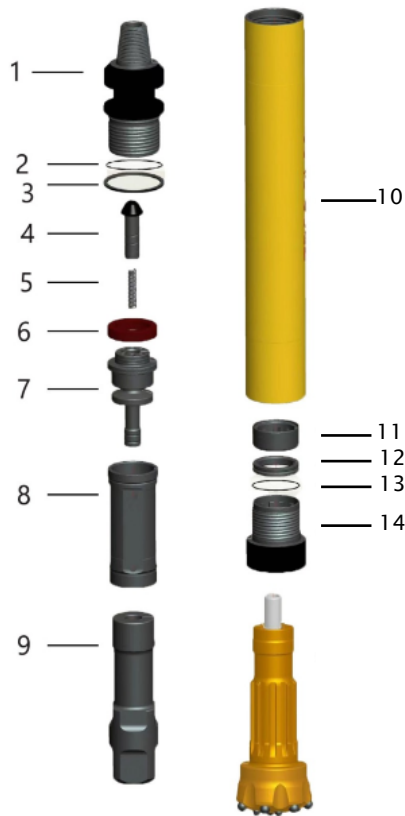


MARTILLO 5" EDS50-QL50V			
No.	DTH HAMMER	MFM5QL50-01	PESO (kg)
1	Top Sub	MFM5QL50-01	15
2	O Ring	MFM5QL50-02	0.01
3	Washer	MFM5QL50-03	0.02
4	Check valve	MFM5QL50-04	0.3
5	Spring	MFM5QL50-05	0.02
6	Compression Bufer	MFM5QL50-06	0.02
7	Air Distributor	MFM5QL50-07	4.3
8	Internal cylinder	MFM5QL50-08	4.2
9	Piston	MFM5QL50-09	19
10	External Cylinder	MFM5QL50-10	24.6
11	Guide Sleeve	MFM5QL50-11	1
12	Bit retaining Ring	MFM5QL50-12	0.45
13	O Ring	MFM5QL50-13	0.01
14	Drive Sub/ Chuck	MFM5QL50-14	4.6

MARTILLO 5" EDS50-QL50V DATOS TÉCNICOS					
LARGO (w/o bit)	PESO (w/o bit)	DIÁMETRO EXTERIOR	SHANK	DIÁMETRO AGUJERO	ROSCA
1158 mm	73 kg	127 mm	QL50	135-155mm	API-3 1/2 REG
PRESIÓN	IMPACTO	CONSUMO AIRE	VELOCIDAD DE ROTACIÓN RECOMENDADA		
1.0-2.5 MPa (145-362 psi)	25HZ en 1.7 MPa (246PSI)	7-19 m3/min (247-670 cfm)	30~60rpm		



MARTILLO 6" EDS60-QL60V



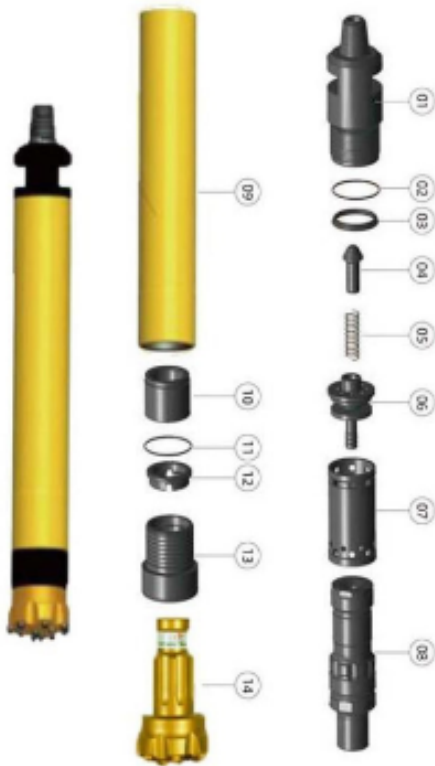
MARTILLO 6" EDS60-QL60V			
No.	DTH HAMMER	MFR6QL60-01	PESO (kg)
1	Top Sub	MFR6QL60-01	20
2	O Ring	MFR6QL60-02	0.01
3	Washer	MFR6QL60-03	0.03
4	Check valve	MFR6QL60-04	1
5	Spring	MFR6QL60-05	0.05
6	Compression Bufer	MFR6QL60-06	0.02
7	Air Distributor	MFR6QL60-07	6.5
8	Internal cylinder	MFR6QL60-08	5
9	Piston	MFR6QL60-09	23.5
10	External Cylinder	MFR6QL60-10	31
11	Guide Sleeve	MFR6QL60-11	1.9
12	Bit retaining Ring	MFR6QL60-12	0.9
13	O Ring	MFR6QL60-13	0.05

MARTILLO 6" EDS60-QL60V DATOS TÉCNICOS					
LARGO (w/o bit)	PESO (w/o bit)	DIÁMETRO EXTERIOR	SHANK	DIÁMETRO AGUJERO	ROSCA
1213 mm	95 kg	148 mm	QL60	155-203mm	API-3 1/2 REG
PRESIÓN	IMPACTO	CONSUMO AIRE	VELOCIDAD DE ROTACIÓN RECOMENDADA		
1.0-2.5 MPa (145-362 psi)	23HZ en 1.7 MPa (246PSI)	8-25 m3/min (283-882 cfm)	20~30rpm		



MARTILLO 7" EDSDD76SV

MARTILLOS DTH

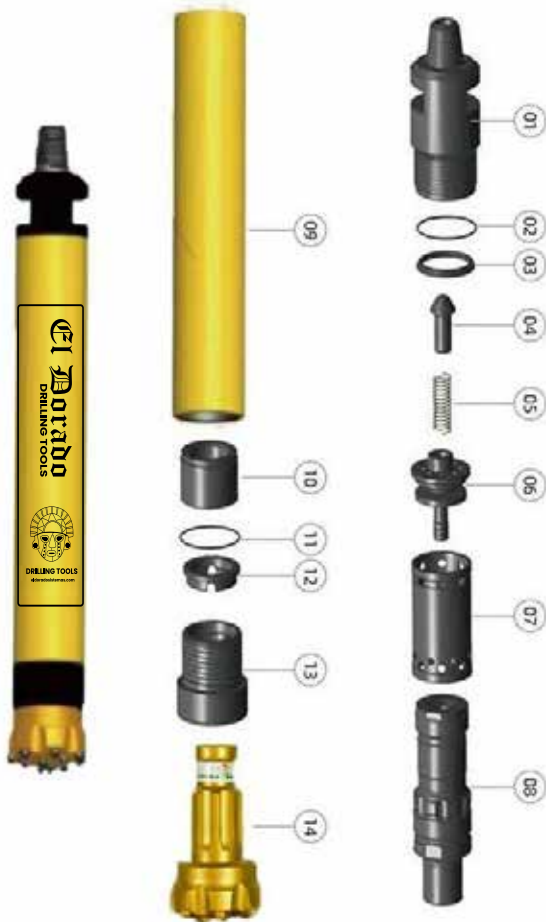


MARTILLO 7" EDSDD76SV			
No.	DTH HAMMER	MFMEUM7C-01	PESO (kg)
1	Top Sub	MFR7C-01	31.2
2	O Ring	MFR7C-02	0.01
3	Disc Spring	MFR7C-03	0.7
4	Check Valve	MFR7C-04	0.65
5	Spring	MFR7C-05	0.09
6	Air Distributor	MFR7C-06	5.5
7	Internal Cylinder	MFR7C-07	5.5
8	Piston	MFR7C-08	34.5
9	External Cylinder	MFR7C-09	47
10	Guide Sleeve	MFR7C-10	5.65
11	Check Ring	MFR7C-11	0.02
12	Bit Retaining Ring	MFR7C-12	1.3

MARTILLO 7" EDSDD76SV DATOS TÉCNICOS					
LARGO (w/o bit)	PESO (w/o bit)	DIÁMETRO EXTERIOR	SHANK	DIÁMETRO AGUJERO	ROSCA
1225 mm	143.5 kg	165 mm	EUM7C	178-216mm	API-3 1/2 REG
PRESIÓN	IMPACTO	CONSUMO AIRE	VELOCIDAD DE ROTACIÓN RECOMENDADA		
1.5-2.8 MPa (217-406 psi)	20HZ en 1.7 MPa (246PSI)	18-28 m3/min (636-1.708 cfm)	30~60rpm		



DTH HAMMER DDT7C



No.	Descripción	Referencia	Peso (Kg)
1	Top Sub	DDT7C-01	31.2
2	O-Ring O	DDT7C-02	0.01
3	Disc Spring	DDT7C-03	0.7
4	Check Valve	DDT7C-04	0.65
5	Spring	DDT7C-05	0.09
6	Air Distributor	DDT7C-06	5.5
7	Internal Cylinder	DDT7C-07	5.5
8	Piston	DDT7C-08	34.5
9	External Cylinder	DDT7C-09	47.0
10	Guide Sleeve	DDT7C-10	5.65
11	Check Ring	DDT7C-11	0.02
12	Bit Retaining Ring	DDT7C-12	1.3
13	DriveSub	DDT7C-13	11.5

DATOS TÉCNICOS

Length (w/o bit)	Weight w/o bit	Outside Diameter	Bit Shank	Bore Hole Diameter	Top Sub Thread
1225mm	143.5kg	165mm	DDT7C	φ178~φ216mm	
Working Pressure	Impact Frequency	Air Consumption			
217~406 psi	20HZ at 246 psi	12,36 cfm			